



SEKEN  LIVING

U M A



UMA is a custom-designed wooden house. The concept is based on an eco-friendly prefab modular cabin/house/pod. It is built by our experienced carpenters, featuring a knockdown concept and a smart house / cabin / pod.

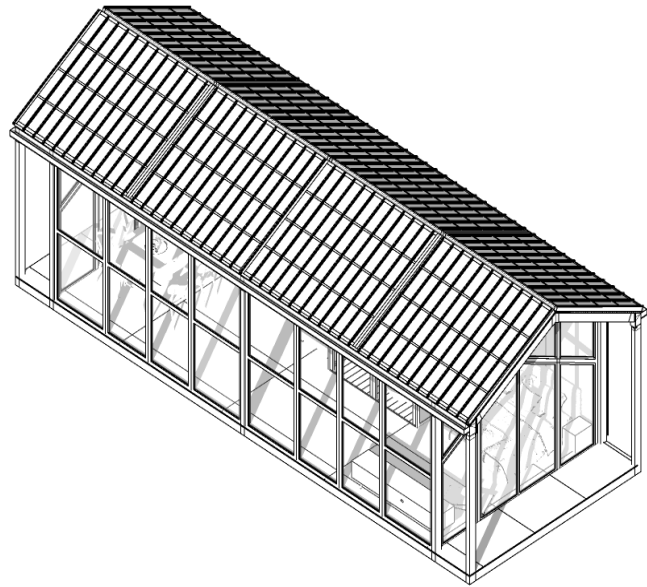
UMA is designed to reduce environmental impacts as we use sustainable and durable materials.

UMA helps create today's customers' dreams with minimalism living in mind, and UMA is also suitable for all your needs, such as eco-hotel & resort, cabin, pod, or tiny and micro-house.

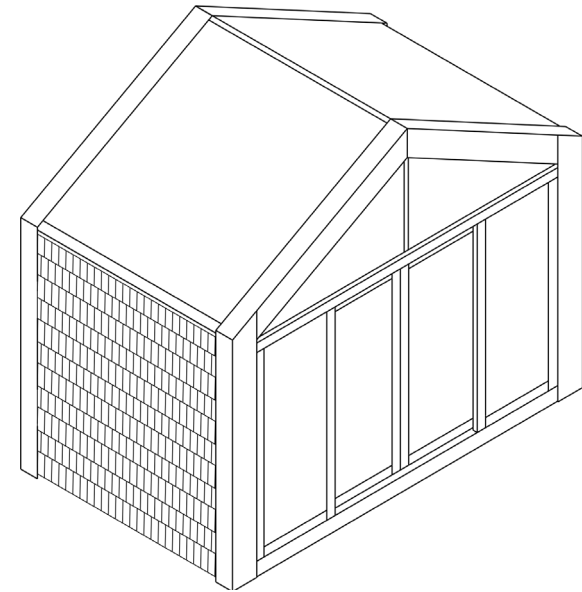
SO CHOOSE WISELY WITH UMA AND BE A PART OF OUR MISSION TO CREATE A SUSTAINABLE LIFESTYLE TO MAKE THE WORLD A BETTER PLACE !

WHY?

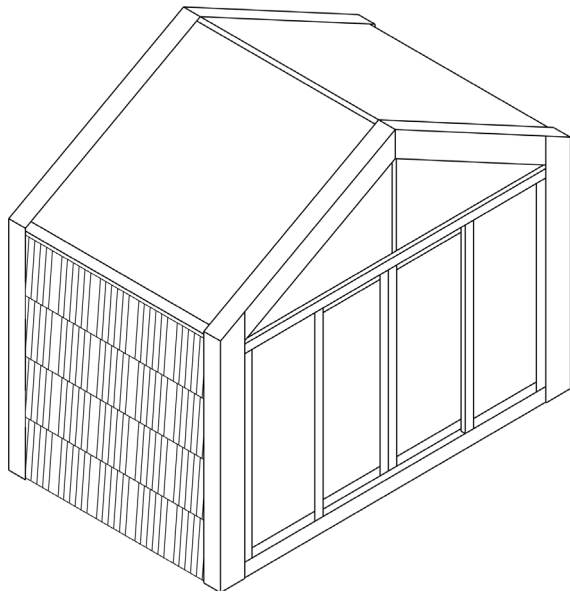
- ¹ Reduce environment impacts
- ² Strong, durable, and eco-friendly materials
- ³ Portable as you can take your prefab house to anywhere; vacation home, backyard, resort, etc.
- ⁴ Less time to built
- ⁵ Easy maintenance
- ⁶ Earthquake resistant structure
- ⁷ We deliver houses world-wide



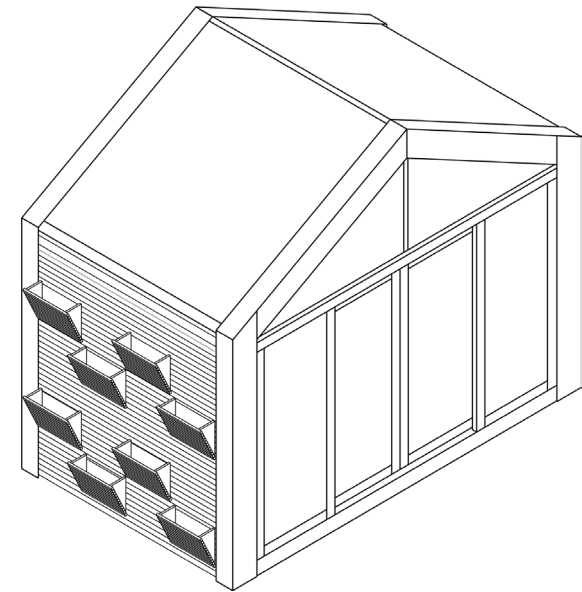
UMA SIJI



UMA TILU



UMA KALE

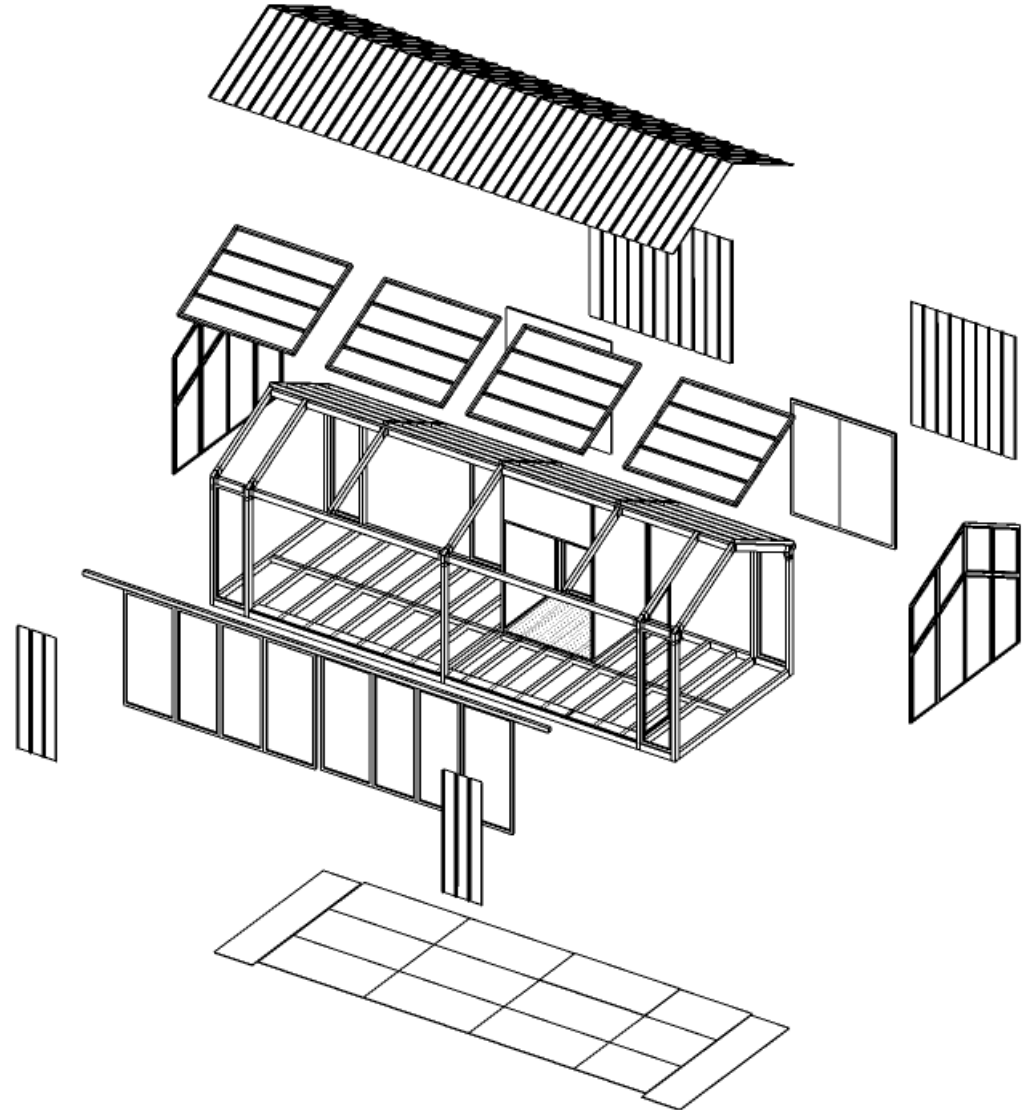
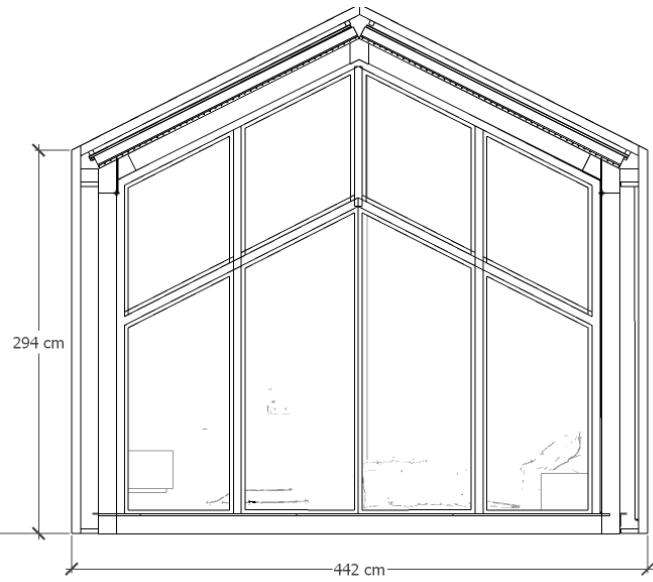
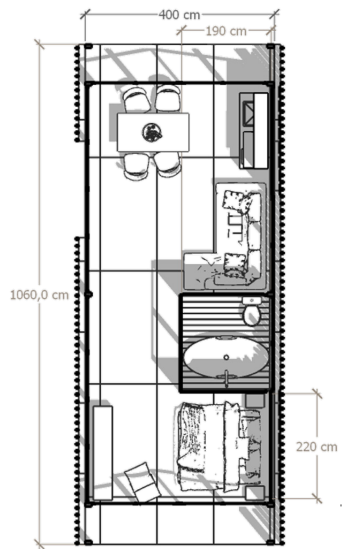
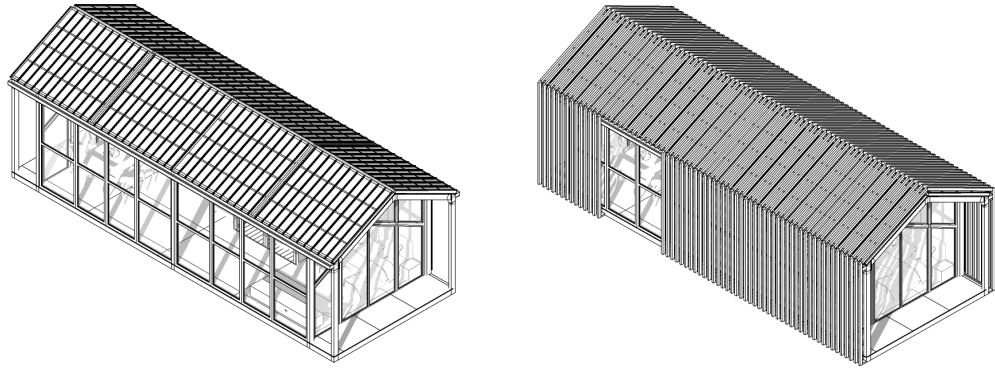


UMA MPAT



UMA SIJI

ASSEMBLY INSTRUCTIONS







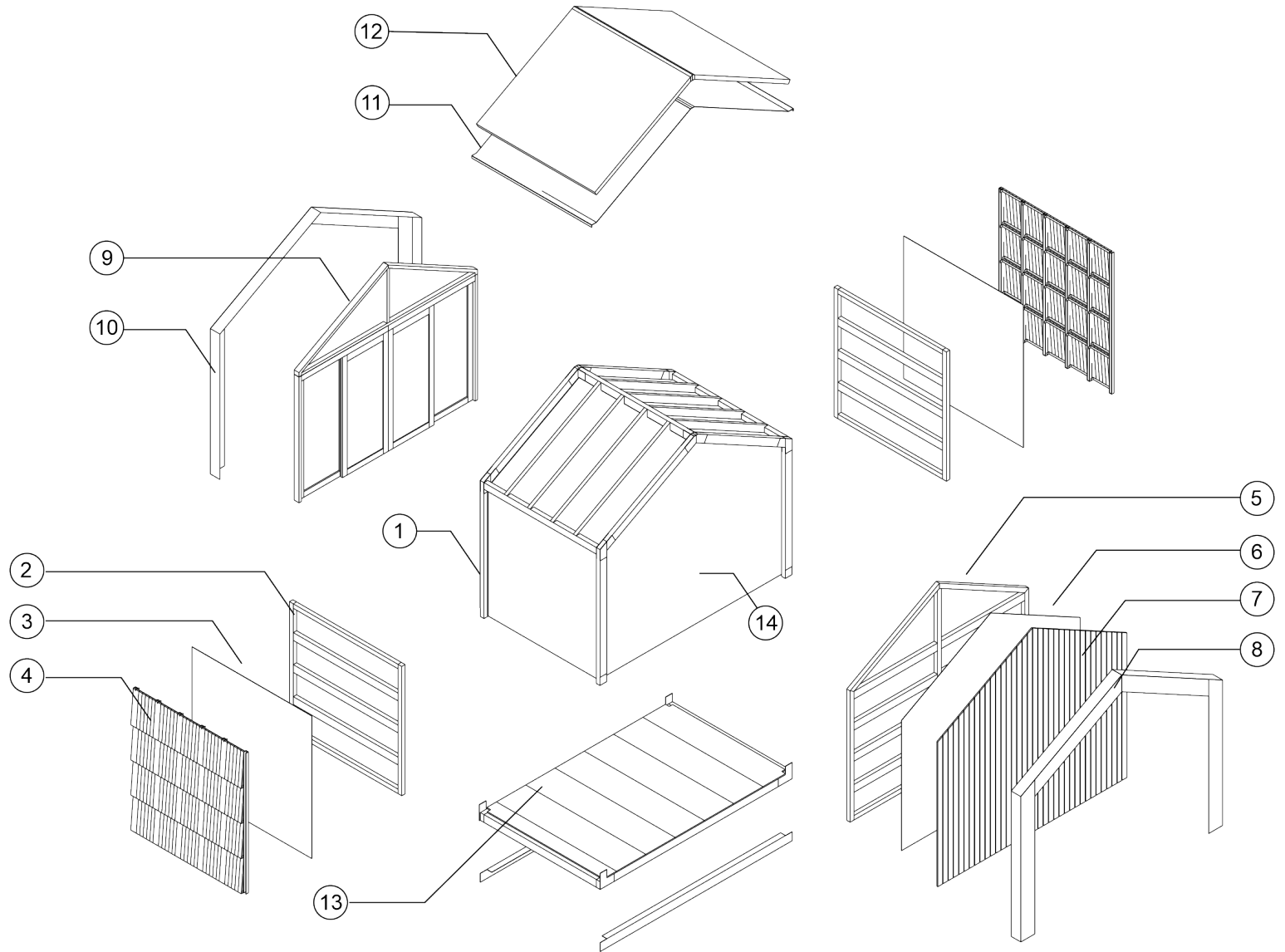
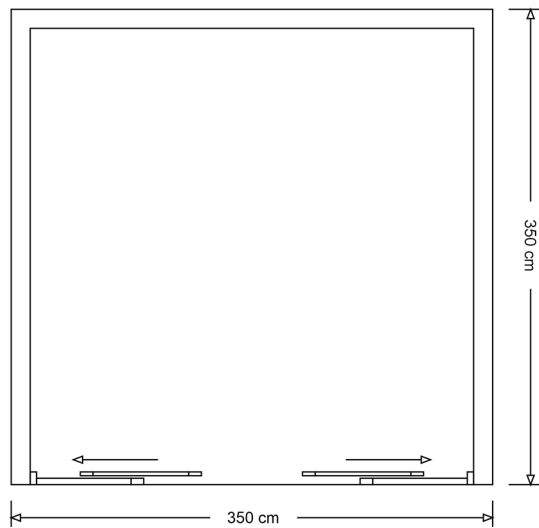
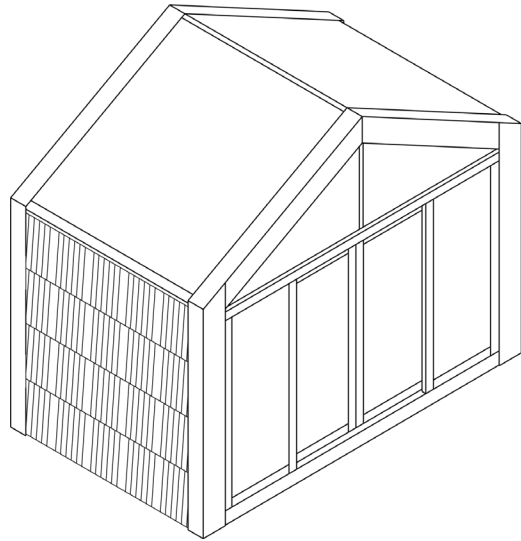






UMA KALE

ASSEMBLY INSTRUCTIONS



- 1. MAIN FRAME
- 2. WALL FRAME
- 3. WATER PROOFING MATERIAL
- 4. SIDE COVER
- 5. BACK FRAME

- 6. WATER PROOFING MATERIAL
- 7. BACK COVER
- 8. BACK CORNER COVER
- 9. DOOR FRAME WITH GLASS
- 10. FONT COVER WITH GLASS

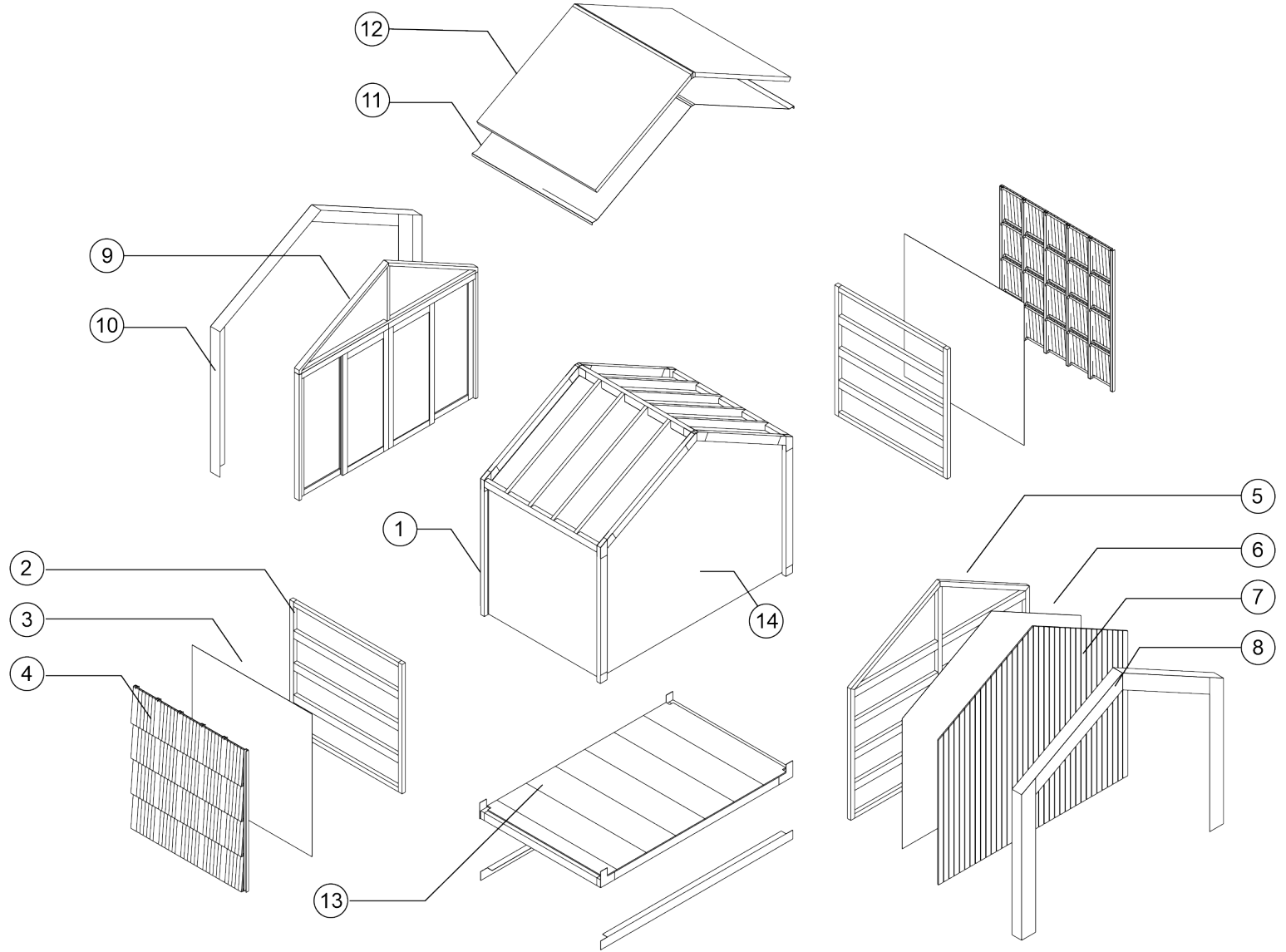
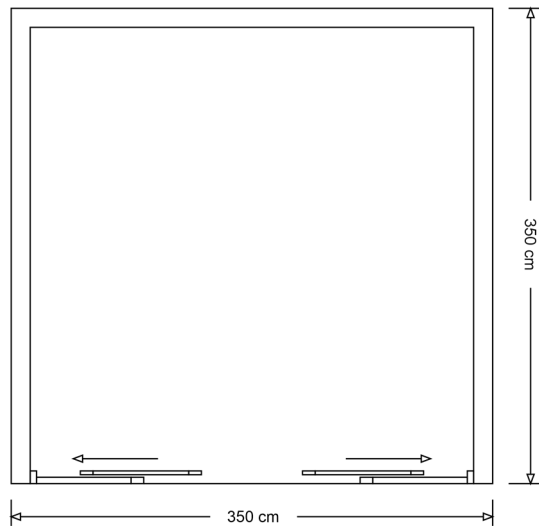
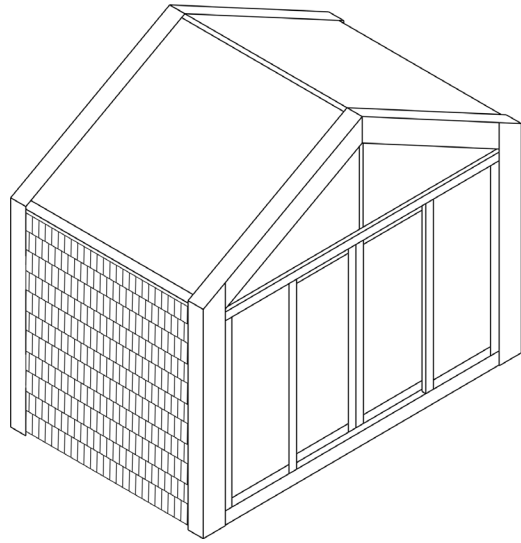
- 11. WATER PROOFING MATERIAL
- 12. ROOF
- 13. BASE FRAME
- 14. INSIDE WALL COVER





UMA TILU

ASSEMBLY INSTRUCTIONS



- 1. MAIN FRAME
- 2. WALL FRAME
- 3. WATER PROOFING MATERIAL
- 4. SIDE COVER
- 5. BACK FRAME

- 6. WATER PROOFING MATERIAL
- 7. BACK COVER
- 8. BACK CORNER COVER
- 9. DOOR FRAME WITH GLASS
- 10. FONT COVER WITH GLASS

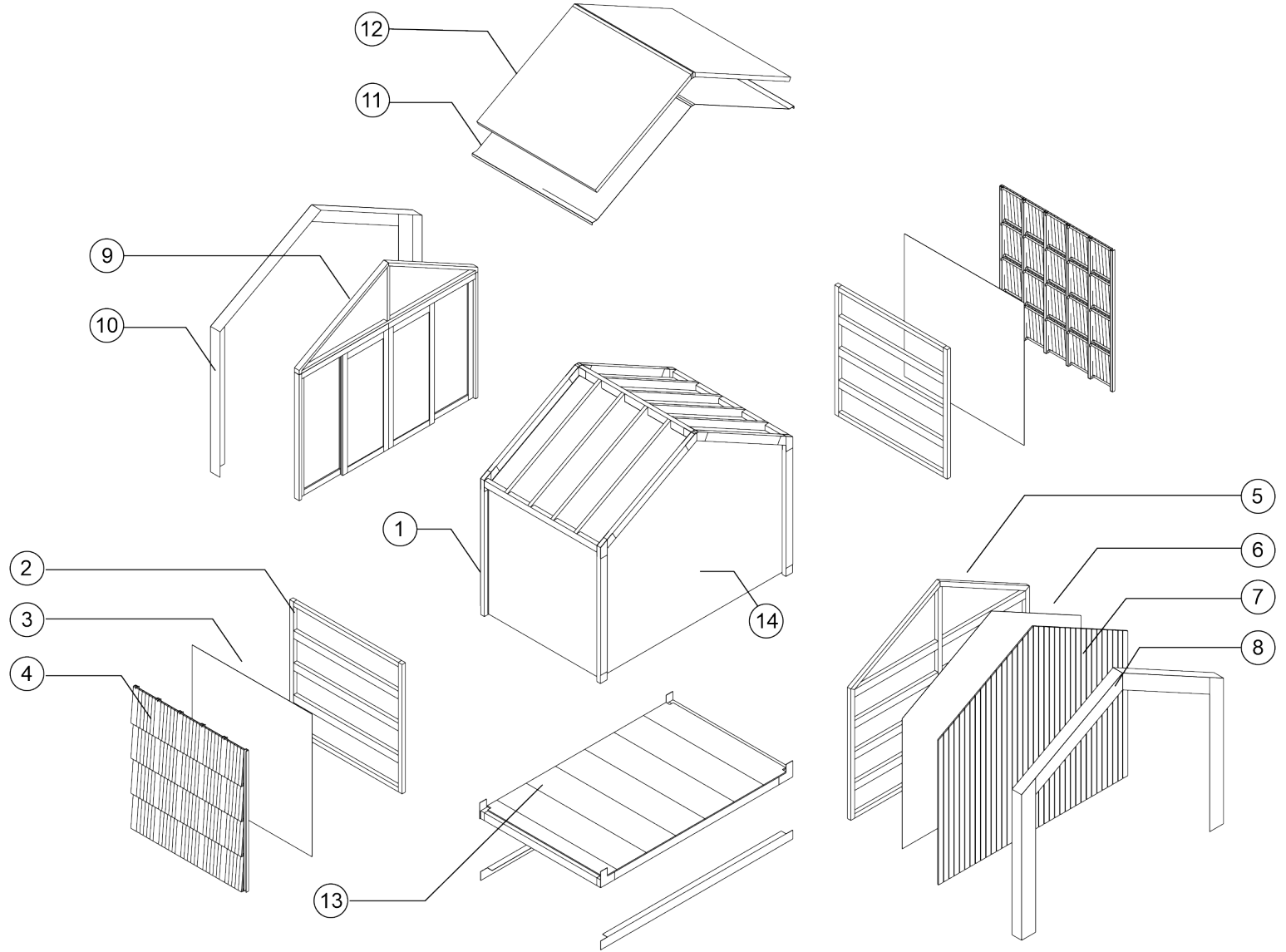
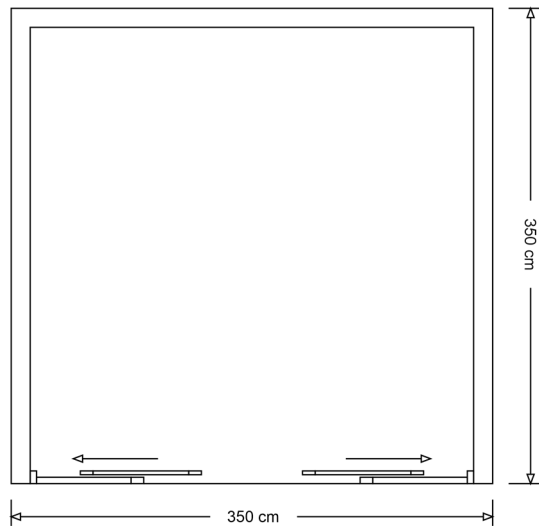
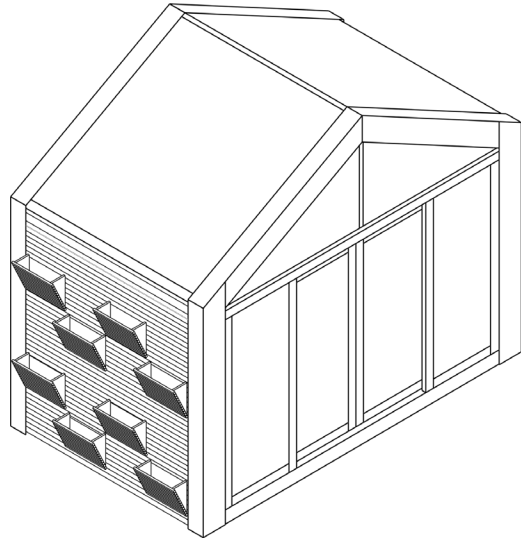
- 11. WATER PROOFING MATERIAL
- 12. ROOF
- 13. BASE FRAME
- 14. INSIDE WALL COVER





UMA MPAT

ASSEMBLY INSTRUCTIONS



- 1. MAIN FRAME
- 2. WALL FRAME
- 3. WATER PROOFING MATERIAL
- 4. SIDE COVER
- 5. BACK FRAME

- 6. WATER PROOFING MATERIAL
- 7. BACK COVER
- 8. BACK CORNER COVER
- 9. DOOR FRAME WITH GLASS
- 10. FONT COVER WITH GLASS

- 11. WATER PROOFING MATERIAL
- 12. ROOF
- 13. BASE FRAME
- 14. INSIDE WALL COVER







HEAD OFFICE

Jl. Ringroad Selatan, Giwangan, Umbulharjo, Yogyakarta

SHOWROOM

JOGJA

Jl. Ringroad Selatan, Giwangan,
Umbulharjo, Yogyakarta

BALI

Jl. Sunset Road No.77,
Seminyak, Kuta, Badung, Bali